

Enhancing Verge Cyclical Maintenance: A Collaborative Approach

Chevron Green Services and Chevron Traffic Management joined forces to deliver an innovative and collaborative solution for cyclical maintenance activities in the Southwest region. The project was designed to fulfil the specific requirements of Ringway, a leading company in asset delivery for National Highways.

Overview

Chevron Green Services faced the challenge of executing cyclical verge mowing activities, covering sign visibility, junction and forward sightlines, a two-meter-wide strip for verge access, and central reservation cutting. To effectively address these requirements Chevron Green Services engaged its sister company, Chevron Traffic Management. Our collaboration provided the advantage of both mobile and static lane closures, ensuring safety and uninterrupted workflow.

The Challenge

With a hard deadline initiated, the project demanded meticulous planning and execution.

Due to extenuating circumstances, there was a two-month delay in starting on site. We knew that meeting the original deadline for the works was crucial, so we partnered with both Chevron Traffic Management and Ringway to initiate a collaborative approach to project delivery. The cyclical maintenance activities necessitated coordination with traffic management to ensure efficient utilisation of road space.

Undertaking works in a new area presented several challenges, including familiarising ourselves with the network, understanding previous maintenance practices, and adapting to diverse working methodologies. Despite starting seven weeks behind schedule, due to the team's professionalism, dedication and commitment, we managed to make the target deadline.

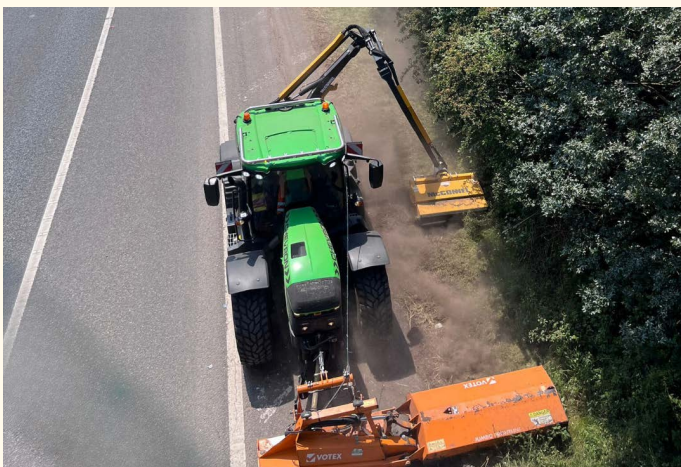


Internal Collaboration

Adam Sayers, Chevron Green Services Contract Manager, expressed his enthusiasm for the seamless collaboration between Chevron Green Services and Chevron Traffic Management. He stated:

“Working together with Chevron Traffic Management to provide our client with a complete in-house service has been great. This collaboration has been a major bonus, allowing us to offer an integrated solution efficiently. The Chevron Traffic Management team’s responsiveness has been instrumental, given the substantial amount of work required within a compressed timeframe.”

Adam Sayers, Contract Manager
Chevron Green Services



Conclusion

The successful partnership between Chevron Green Services and Chevron Traffic Management has significantly contributed to the effective completion of the Southwest cyclical maintenance project. By leveraging internal collaboration and prioritising client and National Highways’ targets, the team overcame challenges and achieved excellent progress. This case study exemplifies the power of teamwork across our Group of businesses in delivering high-quality infrastructure services while maintaining operational excellence.

JayJay Whitehead, Chevron Traffic Management Interim Area Operations Manager, also shared his thoughts on the successful collaboration:

“Chevron Traffic Management has recently had the pleasure of working alongside Chevron Green Services on the Southwest M&R Cyclic maintenance grass cutting works, the benefits this has given us has made a big impact on being able to maximise outputs whilst also collaborating with other works across the network.

Having all this in-house has streamlined the processes and allowed us to build even stronger relationships throughout the group businesses and also with our client Ringway. It has been great working with Chevron Green Services, and we look forward to working alongside them for the rest of these works and future works to come.”

JayJay Whitehead, Interim Operations Manager
Chevron Traffic Management